

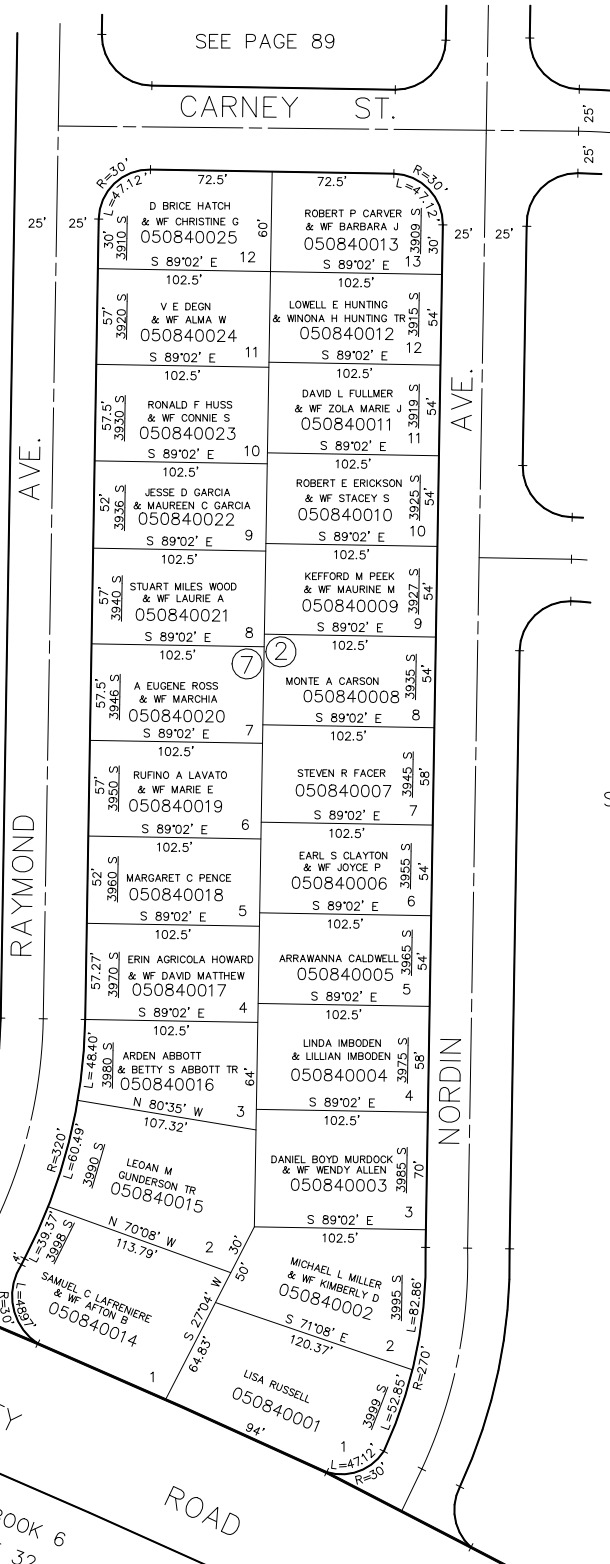
PART OF THE SW 1/4, SEC. 4, T.5N., R.1W., S.L.B. & M.

OAK RIDGE ACRES

BLOCKS 7 & 2
IN SOUTH OGDEN CITY

TAXING UNIT: 27

SCALE 1" = 60'



SEE PAGE 83

FOR COMPLETE ENG DATA SEE
ORIGINAL DEDICATION PLAT IN
BOOK 9, PAGE 37 OF RECORDS.

SEE PAGE 90